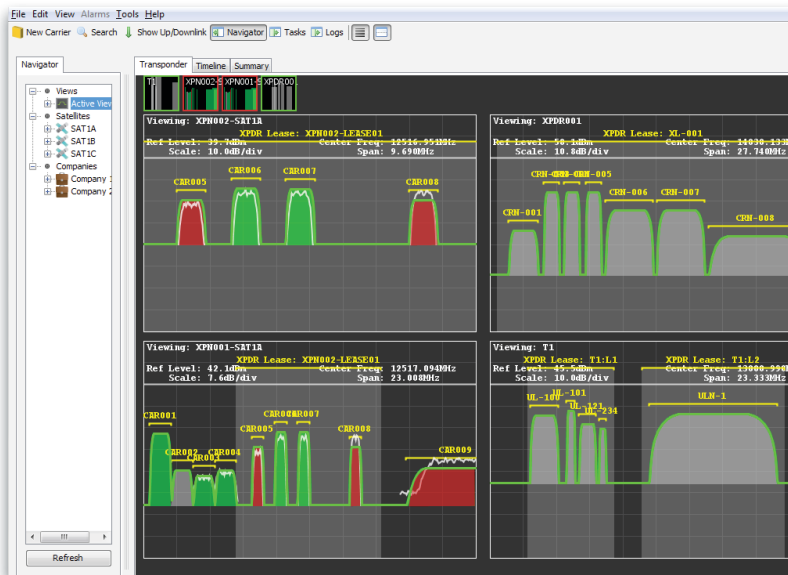


# foresight SSP

Clearbox Systems is proud to present Foresight:  
**A satellite spectrum management tool for satellite operators and satellite users.**



Foresight integrates with SAT Corporation’s SAT-DSA and Monics digital spectrum monitoring software. When Foresight is backed by SAT-DSA or Monics, users can view live and historic carrier traces and carrier health data. Foresight integrates with Newpoint Compass network management software. When Foresight is backed by Compass, equipment can be configured prior to bring-up of the carrier and equipment redundancy can be managed throughout the life of the carrier.

## SATELLITE OPERATORS

Satellite operators can manage their transponder space by adding customer transponder leases and carriers to Foresight. On-air carriers are monitored in real-time via Foresight’s integration with Monics allowing satellite operators to identify any lease breaches and assist with SLA reporting.

Foresight provides a cost benefit to satellite operators by allowing them to manage their transponder space more efficiently and providing a unified spectrum planning and monitoring solution.

## SATELLITE USERS

Foresight allows satellite users to effectively plan and implement their occasional use and full time services. Through tight integration with Newpoint Compass, Foresight can activate the equipment needed to bring a carrier on-air, maintain equipment redundancy for the life of the carrier and deactivate the equipment to tear-down the carrier.

Foresight provides a cost benefit to satellite users by streamlining the planning of their carriers and simplifying the workflow associated with bring-up and tear-down of carriers.

## OVERVIEW

Foresight takes the complexity out of spectrum management by providing:

- **Frequency Planning**  
Determine what bandwidth is available and perform link budgeting.
- **Scheduling**  
Determine when bandwidth is available and schedule a carrier.
- **Workflow management**  
Bring-up, maintain and tear-down carriers, including equipment chain configuration and redundancy through integration with Newpoint Compass.
- **Live monitoring**  
Life of service monitoring for every carrier through integration with SAT Corporation’s Monics.
- **Reporting**  
Information for SLAs;  
Identify transponder lease violations.

## KEY FEATURES

**The Transponder View** provides users with a spectrum analyser like trace view of a transponder's spectrum. transponder leases are displayed as blocks of spectrum on the transponder view with carriers displayed using the parameters provided for each carrier. This can be overlaid with live traces and status information pulled from the Monics digital spectrum monitoring software. Users can add new carriers to the system placing them appropriately where bandwidth is available.

**The Timeline View** provides users with a view of where transponder leases and carriers exist in time. Users can browse through future bookings to search for a suitable window to add new a carrier or browse through historic bookings to perform analysis.

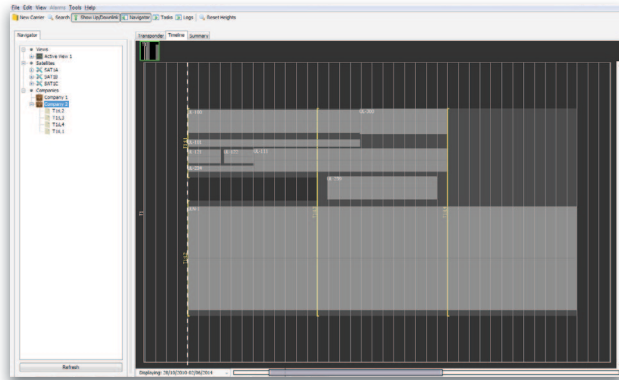
**The Carrier Summary View** provides users with an up to date view of the health of carriers in the system. Users are presented with the current status, Eb/N0, C/N, centre frequency, power and bandwidth for each carrier. This dynamically updating table uses colour indicators to show how close each of the metrics is to limit values for each carrier.

**The Data Explorer** allows users to create, edit, view and remove operational infrastructure and customer information stored in the system. Foresight stores antennas, beams, carriers, companies, contacts, satellites, sites, transponders, and transponder leases along with the ability to define custom data fields. All modifications to data are logged based on user and a full audit history is available. Fine grained User and Group permissions can be set to control who can modify data.

**Integration** with Monics digital spectrum monitoring software adds to Foresight's impressive feature list by providing live and historic carrier traces and live and historic carrier health data including trend plots. With Compass integration it is possible to bring-up and tear-down carriers through either an automated or managed workflow process. Custom integration to 3rd party accounting and business information systems is also possible, please contact sales to discuss your requirements.

**Detailed Reporting** is available on a carrier, lease and transponder basis. Carrier reporting reveals the achieved availability of a carrier along with performance metrics. Lease reporting provides detailed information on lease utilisation and violations, and transponder reporting presents the user with visibility of transponder headroom and utilisation. Reporting is available for future plans, retrospectively as well as throughout the life of a service. This can provide a facility for automated reporting, such as WGS reporting, as some operators require.

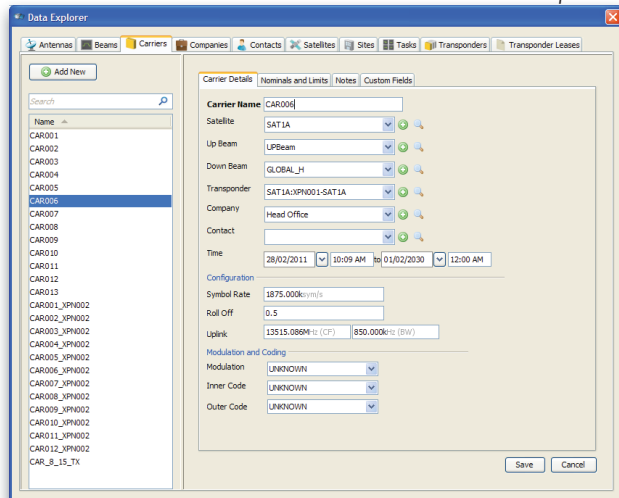
Timeline View



Carrier Summary View

Carrier	Status	Eb/N0	C/N	Centre Frequency	Power	Bandwidth
SAT1A-CAR001	Alarm	0.00	0.00 dB	0.00 MHz	0.00 dB	0.00 kHz
SAT1A-CAR002	Offline					
SAT1A-CAR003	Alarm	11.5	68.09 dB	12500.73 MHz	0.74 dB	1234.68 kHz
SAT1A-CAR004	Normal	0.28	98.09 dB	12511.28 MHz	12.79 dB	1432.40 kHz
SAT1A-LAR000	Normal	15.83	78.38 dB	12513.88 MHz	19.05 dB	6227.09 kHz
SAT1A-CAR006	Normal	20.51	83.28 dB	12515.88 MHz	24.19 dB	6217.64 kHz
SAT1A-CAR007	Normal	20.92	83.55 dB	12516.85 MHz	24.19 dB	6238.95 kHz
SAT1A-CAR008	Normal	20.30	81.03 dB	12520.27 MHz	24.38 dB	6268.66 kHz
SAT1A-CAR009	Normal	0.36	77.05 dB	12522.27 MHz	18.59 dB	4988.19 kHz
SAT1A-CAR010	Normal	8.60	74.39 dB	12525.02 MHz	22.26 dB	5474.37 kHz
SAT1A-LAR011	Alarm	18.93	83.98 dB	12520.26 MHz	24.89 dB	6877.99 kHz
SAT1A-CAR012	Alarm	18.56	83.02 dB	12520.26 MHz	24.92 dB	6880.05 kHz

Data Explorer



## CONTACT



**AUSTRALIA**  
Clearbox Systems Pty Ltd  
Unit F11, 16 Mars Rd  
Lane Cove  
NSW 2066 AUSTRALIA

Paul Solomon  
sales@clearboxsystems.com.au  
+61 2 9114 6164



**INTERNATIONAL**  
SAT Corporation  
321 Soquel Way  
Sunnyvale California  
94085 USA

Freddy Adames  
fadames@sat.com  
+1 408 220 9120