

1 Features:

Graphical representation of network configuration

- Overview
- Site
- Region
- Detail

Powerful interface layer

- 14,000 transactions per second
- SNMP
- TL1
- Ethernet
- RS 232/422/485
- GPIB/HPIB
- Contact closure

Alarm and event management

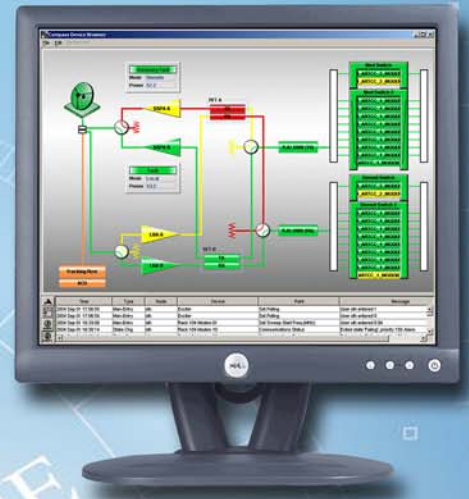
- Filtering
- Suppression
- Correlation
- Historical logging
- Trending

Flexible Mediation Layer

- SNMP - Seamless interface to HP Openview
- ODBC Interface
- Remedy Interface
- API for:
 - Scheduling
 - Billing
 - Performance management
 - Upper-level management systems
 - Customer service
 - Newpoint Compass

Optional Features

- Carrier management
- Spectrum Analyzer interface
- Visual Driver Studio
- Oracle database interface



Newpoint Compass was created from the ground up to protect the vital traffic handled by communications networks easily and with outstanding reliability - all while minimizing integration costs to save money. Users benefit from Compass with reduced workload, while owners benefit from reduced operation costs and higher levels of customer satisfaction.

Compass is a complete software package for managing all types of networks. It is built with the flexibility that allows for support of up to 100,000 devices and designed to meet the requirements of diverse applications from satellite to VDSL to the Internet. Ready to interface to devices that are SNMP-based, as well as with devices that require serial or contact closure interfaces, Newpoint Compass does it all.

New in version 6.0 is a familiar, Windows Explorer like administrator. The new Administrator enhances the users experience and capability to administrate a real-time network management system.

Also new for version 6.0 is Compass Creator, a unique application that automatically configures your M&C interface at the touch of a button. Once equipment is added to the system, Creator builds device detail pages, overview pages and configures the database for you. This revolutionary tool significantly reduces the time associated with creating an M&C system. Compass comes packaged with a built-in library of device drivers, and also supplied with a Visual Driver Studio that allow users to write their own drivers.

The alarm log window displays all open and unacknowledged alarms, and includes the ability to filter alarms by type and priority, simplifying system management. Detailed records of all system activity, are stored for system analysis.

Compass can be configured to interact with external data that is part of a corporate database such as Oracle. Having Newpoint Compass is like having an instant power tool for managing your network. Click. The system is drawn and configured. Click. A device is added. Click. A system is modified. Click. A pathway is rerouted. Drag. An icon is placed. Click. Displays are duplicated, renamed or modified to speed operation and minimize labor. Click. A device driver is added.

A large variety of options are available that makes Newpoint Compass a flexible package that can handle all converging network management requirements.